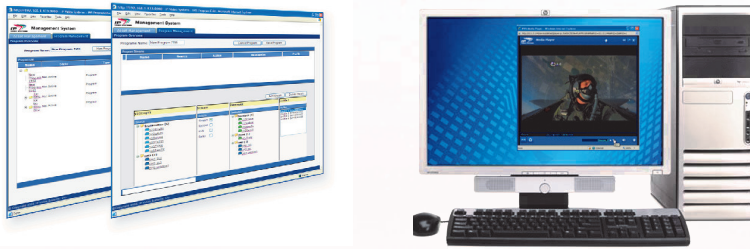


IPVS Management System (IMS) for asset and program management



The IP Video Systems collaboration and streaming products are the platform of choice among defense systems integrators, large enterprises, and organization in need of high-resolution graphics and HD video transport and switching with low latency.

The V₂D (Video-to-Data) platform is exceptionally well-suited for collaboration and video distribution over any type of Ethernet/IP network. IP Video Systems complements this product with recording, real-time streaming and PVR relay capabilities through the DMS (Digital Media Server) product line. These components provide an unmatched solution for video-based collaboration from standard resolution (NTSC/PAL) video up to high-resolution computer graphics video.

IP Video Systems provides the IMS (IP Video Systems Management System) to configure these functions in an easy and user-friendly way to facilitate larger-scale deployments.

The IMS contains two major modules: the *Asset Management module* provides configuration, accounting and maintenance functions for the individual elements of the collaboration and streaming solution; and the *Program Management module* provides configuration and control of live and archived content created by this solution.

Asset Management tools allows the operator to manage individual elements, or group elements by type, location, or user-defined criteria. Element configuration templates can be saved to facilitate deployment of additional systems. Asset management also provides helper tools and wizards to assist in configuration and tasks optimization.

The *Program Management* tools allows creating, planning, activating and controlling 'programs'. Each program consists of multiple streams provided by the IP Video Systems components: basic connections, live recordings, playbacks and/or PVR relays. Programs are defined through the Add Program and Edit Program screens. Additional screens allow for scheduling program execution, initiating ad hoc programs, monitoring running programs, and maintaining the library of archived program recordings.

Product Features

- Intuitive browser-based management
- Easy menu driven interface
- *Asset management* tools:
 - Manage individual elements
 - Group elements by type, location or user-defined criteria
 - Save element configuration templates to facilitate deployment of additional systems
 - Help tools and wizards to assist configuration and tasks optimization
- *Program management* tools:
 - Create, plan, activate, and control 'programs'
 - Create wide range of programs: basic connections, live recordings, playbacks, and relaying
 - Add, create, and edit programs
 - Initiate ad hoc programs
 - Monitor running programs
 - Maintain library of archived program recordings
- Facilitate large-scale deployment

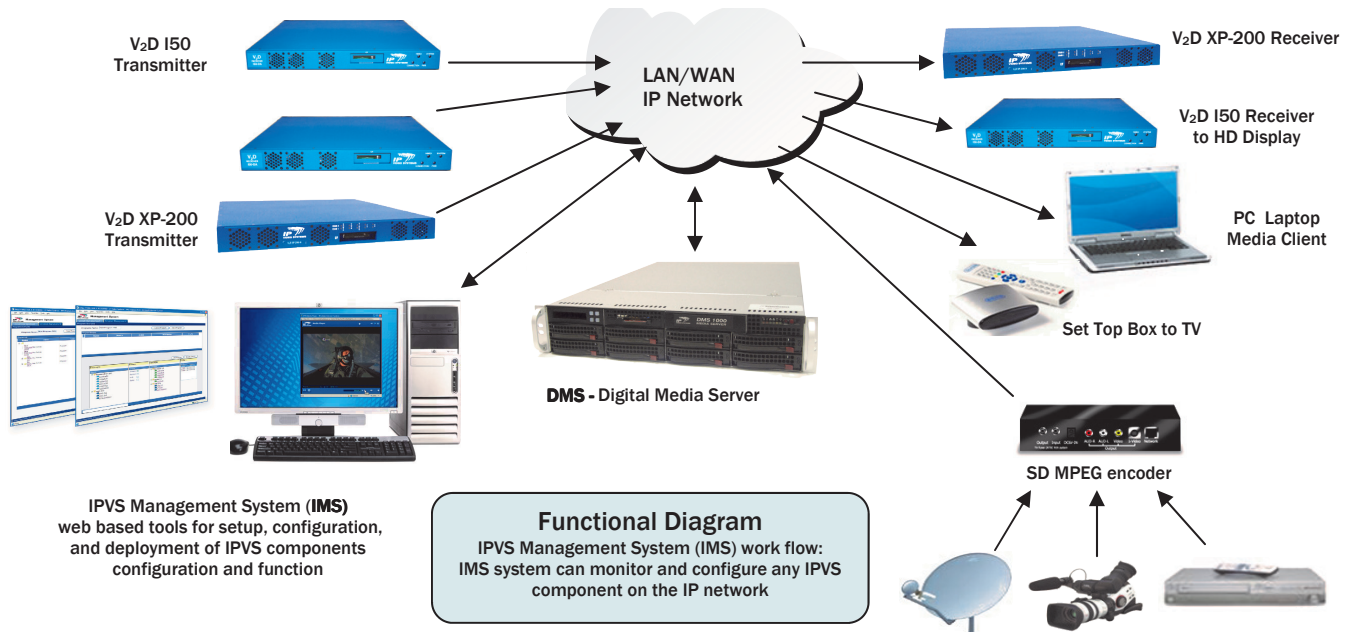
Applications

- Create and edit configuration, accounting, and maintenance functions
- Setup IP addresses of source and destination devices
- Setup bit rate & other requirements for streaming and replication of streams
- Simplifies IP Video Systems component connections and configuration
- Synchronized playback of multiple streams

Benefits

- Easy management of all video and graphics streams
- Easy access and monitoring by any network user
- Complete recording, relay, streaming and media distribution solution
- Complements IP Video Systems' DMS 100/200/1000/2000 digital media servers for capturing and synchronized viewing on multiple V₂D Rx and PC clients

IPVS Management System (IMS) Technical Specifications



IPVS Management System Specifications

Asset management applications

- IP Video Systems V₂D Tx/Rx and DMS product setup and configuration management
- Video delivery, compression optimization tools and wizards
- Library management
- On-line connection management
- Automatic device discovery
- Online statistics
- 'Heartbeat' monitoring detects if a device becomes unreachable

Program management applications

- Comprehensive overview of ongoing, planned and finished 'programs'
- Create simple and complex programs with one or more live connections, recordings, playbacks and PVR relays
- Program control: start/stop streams, real-time record and playback control (pause/resume)
- Change ongoing programs and schedules

IMS system benefits

- Simple and comprehensive control of complex functionality
- Program and device management
- GUI-based configuration, runs in browser
- Supports multiple browser windows on one workstation
- Scalable implementation from a low-cost PC to multiple workstations

Minimum system requirements

- 3-GHz PC
- Windows 2000 or Windows XP
- 1-GB memory
- 10-GB disk space
- Ethernet network connection



Enabling the
Advanced Visual Enterprise

Preliminary product specification subject to change.
 IP Video Systems logo and "Enabling the Advanced Visual Enterprise", are the trademarks of IP Video Systems, Inc.

© Copyright 2007 by IP Video Systems Inc. All rights reserved.